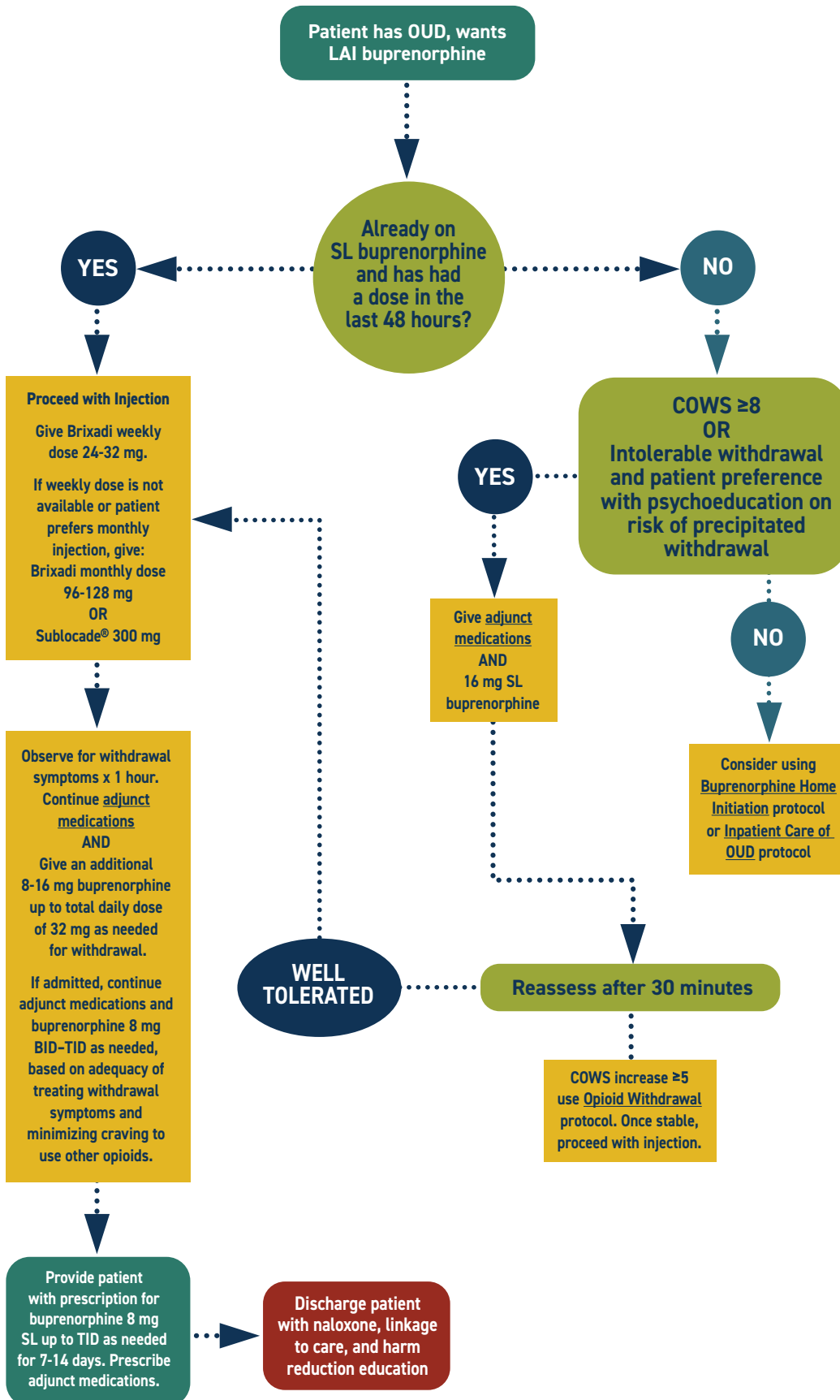


## Initiation of Long Acting Injectable Buprenorphine in Acute Care Settings



### Considerations

This protocol suggests using the Brixadi® weekly dose to initiate treatment due to lower risk of opioid withdrawal. Other LAI buprenorphine formulations are also appropriate.

Engage in shared decision making with the patient prior to initiating treatment. Inform of the risk of precipitated withdrawal, especially with COWS  $< 8$  and/or concurrent stimulant intoxication.

Potential complicating factors include:

- Allergy or sensitivity
- Severe respiratory compromise
- Chronic use of long acting opioids (e.g., methadone or Oxycontin®)

Consider expert consultation, but prioritize treating symptoms.

It can take several months for the injection to achieve full clinical effect. Prescriptions for SL buprenorphine and adjunct medications facilitate retention in care.

Consider screening for HIV, HCV, STIs, and mental health comorbidities.

### Program partners

